

NEW

Hema One

Compact & Versatile Fully Automated Solution

• Reliable • User-friendly • Compact

FAST & ACCURATE DIAGNOSIS OF:

Gastro-intestinal

Diabetes

Hospital Admission

Cardiac panel

Metabolic Disorders

Vitamin Deficiencies

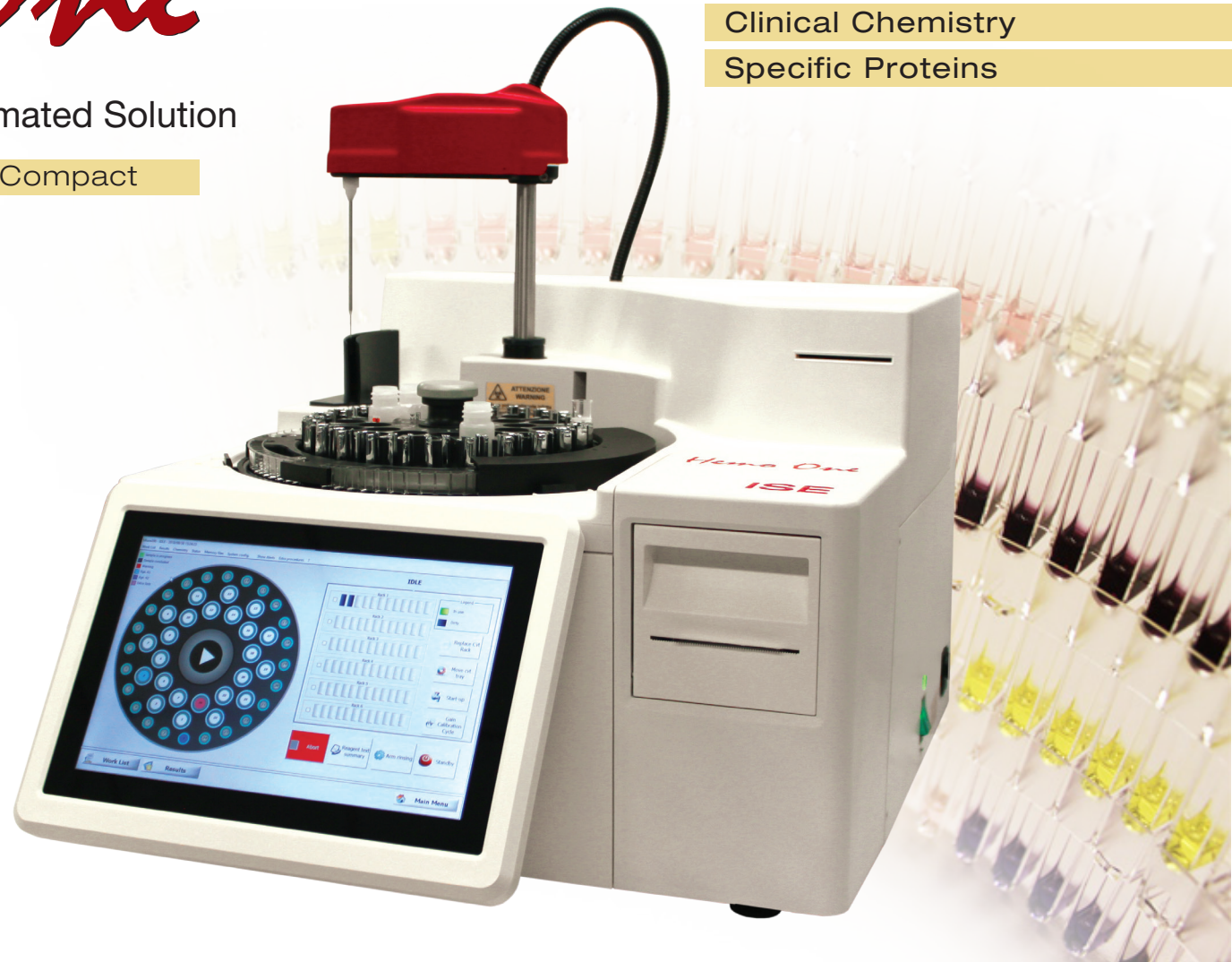
Inflammatory Diseases

Clinical Chemistry

Specific Proteins

ISE

CUSTOMISED SOLUTIONS
FOR YOUR LABORATORY



Hemo One

COMPACT & VERSATILE
A FULLY AUTOMATED SOLUTION

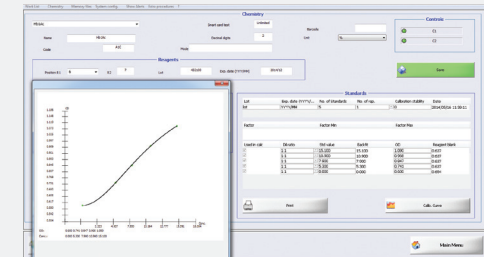


- A fully automated, highly integrated compact analyser
- Specially designed for small to mid-sized laboratories, specific hospital settings, (rural) labs, back-up
- Easy to operate menu for fast startup and minimum down time
- Disposable reaction cells
- Low water consumption
- Minimum maintenance required
- Very cost effective and precise
- Smart card
- Integrated computer and thermal printer
- 2 years warranty
- Fully developed and made in Italy



HEMO ONE SOFTWARE

MAKES YOUR LIFE EASIER IN THE LAB



- Graphic and friendly interface assists the operator and simplifies the daily routine work
- The Hemo One software is modular and expandable for future parameters
- Simple to operate, minimum training required
- Remote maintenance possible on demand
- Programmable instrument stand-by and wake-up functionality
- Display of quality control levels with Levy-Jennings graphics
- Fully bidirectional L.I.S. support with or without Host/Query
- Smart visualisation from all types of calibrations
- Self-diagnosis and alarm procedures are an integral part of the Hemo One software
- Custom made profiles for easy operation
- Powerful and expandable archive for patients test result, including standards and QC-results
- Active monitoring of reagent volumes and main instrument liquid levels

Hema One

SMALL FOOTPRINT & FLEXIBILITY IS THE ANSWER
RELIABLE, FAST & SIMPLE



FULLY AUTOMATED SOLUTION

System	Closed system
Throughput	Up to 120 tests/hr mono-reagent Up to 60 tests/hr bi-reagent (First result after starting: in 10-minutes)
Pretreatment	On board, automatic pretreatment of whole blood with HbA1c lysing reagent
Number of arms	1 liquid dispenser arm with capacitive liquid level detector and obstacle sensor
Number of reagents positions	24 (up to 4 reagents per application)
Number of samples / calibrators / controls	24
Vials sizes	12-13 mm Ø with 75/85 mm height, and 3 ml sample cups
Diluter	1 high-precision micro-metering pump for dosing reagents and samples
Reagent volume	1 ÷ 400 µl
Sample volume	1 ÷ 300 µl
Dosing resolution	1 microliter
Typical reading volume	200/250 µl
Calibration	On-line Calibration
Calibration curves	Linear regression, piece-wise, cubic spline, Logit Log, polynomial (will be selected automatically by assay application)
Automatic dilution	Automatic / on request
Incubation & Reading cuvettes	72 disposable on-board
Results	Calibration, QC and patient results archive with full traceability Reporting both DCCT (%) and IFCC (mmol/mol)

TECHNICAL SPECIFICATIONS

SIMPLE TO OPERATE - LOW MAINTENANCE

Reaction temperature	+37°C ± 0.1°C
Wavelengths	8 from 340 to 700 nm
Light source	Long life halogen lamp (2000 hours life)
Photometric linearity	0 ÷ 3.0 OD
Water consumption	Low water consumption due to use of disposable cuvettes
Barcode	Yes (fully integrated for sample and reagents)
Interface to LIS host	Bi-directional connection, Ethernet
STAT function	Selectable on all sample positions
Computer	Internal, Embedded single board computer and 10.1-inches LCD with touchscreen
Operational system	MS Windows® 11
GUI	Easy to use and wizard-style user interface
Printer	USB connection
Working Environment	Temperature 18 ÷ 32°C Relative humidity 20 ÷ 80 % (RH without condensation)
Real-time electronics	Modular, SMD
Power management	Automatic start-up and shut-down
Power supply	100 ÷ 240 Vac, 50-60 Hz
Dimensions	45(W) x 46(D) x 50(H) cm
Weight	≈ 30 kg



HEMO ONE

<i>Code</i>	<i>Product</i>	<i>Tests</i>	<i>Package</i>
HEMO ONE CLINICAL CHEMISTRY REAGENT KITS			
R3330000005	ALBUMIN	344	4x17,5 ml
R3330000008	ALT - GPT	220	2x18+2x4,5 ml
R3330000006	ALP DEA	220	2x18+2x4,5 ml
R3330000007	AMYLASE	192	4x10 ml
R3330000009	AST - GOT	220	2x18+2x4,5 ml
R3330000010	BILIRUBIN DIRECT	220	2x18+2x4,5 ml
R3330000011	BILIRUBIN TOTAL	220	2x18+2x4,5 ml
R3330000012	CALCIUM	344	4x17,5 ml
R3330000014	CHOLESTEROL	344	4x17,5 ml
R3330000015	CHOLINESTERASE	220	2x18+2x4,5 ml
R3330000016	CK MB	220	2x18+2x4,5 ml
R3330000017	CK NAC	220	2x18+2x4,5 ml
R3330000018	CREATININE	220	2x18+2x4,5 ml
R3330000019	GAMMA GT	220	2x18+2x4,5 ml
R3330000003	GLUCOSE	344	4x17,5 ml
R3330000001	HbA1c	50	1x18,5+1x3,4 ml
R3330000013	HDL CHOLESTEROL	220	2x18+2x4,5 ml
R3330000054	LDL CHOLESTEROL	220	2x18+2x4,5 ml
R3330000021	LDH-P	220	2x18+2x4,5 ml
R3330000020	IRON FERENE	220	2x18+2x4,5 ml
R3330000022	MAGNESIUM	344	4x17,5 ml
R3330000023	PHOSPHOROUS	344	4x17,5 ml
R3330000024	TOTAL PROTEIN	192	4x10 ml
R3330000025	TRIGLICERYDES	344	4x17,5 ml
R3330000026	UREA	220	2x18+2x4,5 ml
R3330000027	URIC ACID	220	2x18+2x4,5 ml
R0000000005	VITAMIN D	100	1x15,5+1x2,8 ml

MULTICALIBRATOR AND CONTROLS

<i>Code</i>	<i>Product</i>	<i>Package</i>
R0300000006	MULTICALIBRATOR	2x3 ml
R0400000006	NORMAL CONTROL SERUM	3x5 ml
R0400000106	PATHOLOGICAL CONTROL SERUM	3x5 ml

DEDICATED CALIBRATORS AND CONTROLS

R0300000003	HbA1c CALIBRATOR	5 level
R0400000004	HbA1c CONTROL HIGH	1x1 ml
R0400000007	HbA1c CONTROL LOW	1x1 ml
R0000000006	VITAMIN D CALIBRATOR	5x1 ml
R0000000007	VITAMIN D CONTROL	2x3 ml

STOOL DEDICATED REAGENT KITS

<i>Code</i>	<i>Product</i>	<i>Package</i>
R3330000058	Haemoglobin (FOB) detection kit	100 test
R3330000059	Calprotectin detection kit	100 test
R3330000060	Transferrin detection kit	100 test

STOOL TESTS CALIBRATORS & CONTROLS

R3330000061	Sample dilution vials for FOB	100x2 ml
R3330000064	Calibrator for FOB	6x1 ml
R3330000065	Calibrator for Calprotectin	6x1 ml
R3330000067	Calibrator for Transferrin	6x1 ml
R3330000068	Control for FOB	2x1 ml
R3330000069	Control for Calprotectin	2x1 ml
R3330000071	Control for Transferrin	2x1 ml

HEMO ONE TURBIDIMETRY DEDICATED REAGENT KITS

Code	Product	Tests	Package
R3330000028	ALBUMIN	70	1x14,5+1x3,2 ml
R3330000029	ALFA-1 ACID GLYCOPROTEIN	70	1x16+1x2,5 ml
R3330000030	ALFA-1 ANTITRIPSIN	70	1x18,5+1x3,8 ml
R3330000031	ALFA-2 MACROGLOBULIN	70	1x16,5+1x1,9 ml
R3330000032	ANTITHROMBIN III	70	1x16+1x2,5 ml
R3330000033	APOLIPOPROTEIN A1	70	1x18+1x3,6 ml
R3330000034	APOLIPOPROTEIN B	70	1x18,5+1x2,4 ml
R3330000035	C1 ESTERASE INHIBITOR	70	1x14,5+1x1,8 ml
R3330000036	CERULOPLASMIN	70	1x14,5+1x2,4 ml
R3330000037	COMPLEMENT C3	70	1x14,5+1x2,4 ml
R3330000038	COMPLEMENT C4	70	1x14,5+1x2,4 ml
R3330000039	CRP	70	1x14,5+1x1,8 ml
R3330000040	FIBRINOGEN	70	1x17,5+1x4,3 ml
R3330000041	HAPTOGLOBIN	70	1x14,5+1x2,4 ml
R3330000042	IGA	70	1x18,5+1x3,1 ml
R3330000043	IGG	70	1x18+1x4,3 ml
R3330000044	IGM	70	1x18+1x2,5 ml
R3330000045	KAPPA LIGHT CHAIN	70	1x18,5+1x4,5 ml
R3330000046	LAMBDA LIGHT CHAIN	70	1x18,5+1x4,5 ml
R3330000047	LIPOPROTEIN (A)	65	1x18,5+1x3,6 ml
R3330000002	MICROALBUMIN	70	1x14+1x2,4 ml
R3330000048	PREALBUMIN	70	1x16+1x1,7 ml

LATEX DEDICATED REAGENT KITS

R3330000050	ANTI-STREPTOLYSIN (O)	70	1x18+1x3,2 ml
R3330000051	BETA 2 - MICROGLOBULIN	70	1x18+1x2,8 ml
R3330000052	FERRITIN	70	1x14,5+1x5 ml
R3330000053	RHEUMATOID FACTOR	70	1x14,5+1x3,1 ml

DEDICATED CALIBRATORS & CONTROLS

Code	Product	Package
R1300001301	CRP Standard High	1 ml
R1300002501	Protein Standard High	1 ml
R1300001501	APO A1/B Standard High	1 ml
R1300002001	Microalbumin Standard kit	5x1 ml
R1300002201	Fibrinogen Standard	0,5 ml
R1300001701	Lipoprotein (A) Standard High	1 ml
R1400000801	Microalbumin Control high	1 ml
R1400001801	Microalbumin Control low	1 ml
R1400000401	APO A1/B Control	1 ml
R1400001701	Fibrinogen control	1 ml
R1400000501	Lipoprotein (A) Control Low	1 ml
R1400000601	Lipoprotein (A) Control High	1 ml
R1400000901	Immunology control low	1 ml
R1400001001	Immunology control high	1 ml

LATEX CALIBRATORS & CONTROLS

R1300001101	ASL(O) Standard High	1 ml
R1300001901	RF Standard High	1 ml
R1300002901	Ferritina Standard kit	5x1 ml
R1300002601	Beta 2 Microglobulin Standard kit	4x1 ml
R1400000301	Beta 2 Microglobulin Control Low	1 ml
R1400001601	Beta 2 Microglobulin Control High	1 ml

CE-IVD marked reagents panel:

- Ready to use
- Stable formulations based on IFCC & DGKC recommendations for whole blood, serum, plasma and urine samples

R&D and Production:

I.S.E. S.r.l.
Via Luigi Einaudi, 7
Guidonia Montecelio
00012 Rome, Italy

Tel: + 39 0774 579 365
Fax: + 39 0774 353 085

Legal site:
I.S.E. S.r.l.
Via delle Driadi, 45
00133 Rome, Italy



I.S.E. is a dynamic company specialised in development and manufacturing of Laboratory Analysers and associated Reagents.

I.S.E. is an ISO 9001:2015 and ISO 13485:2016 certified company and all our products are CE marked. Several other certifications available.

I.S.E. have thousands of solutions installed worldwide. I.S.E. provides to our customers high end, high quality and reliable solutions of Analysers and Reagents.

Ease of use, combined with minimal operating requirements makes ISE systems the best choice for any laboratory.

We are dedicated to customer satisfaction and will do the utmost to respond quickly to your needs.



www.logotech-ise.com

Customer Care Center:
info@logotech-ise.com

Tel: +39 0774 579 326
Fax: +39 0774 579 085

Sales and Marketing office:
sales@logotech-ise.com

Tel: +39 0774 579 334
Fax: +39 0774 579 085

Technical service:
service@logotech-ise.com

Tel: +39 0774 579 364
Fax: +39 0774 579 085

Order handling and logistics:
order@logotech-ise.com

Tel: +39 0774 579 365
Fax: +39 0774 579 085

© Hemo One 10.2023 Ref. BRO1010 V2.9 I.S.E S.r.l.

All rights reserved. All trademarks are property of their respective owners. Specifications are subject to change without notice.

