

Miura Family

Fully-automated Clinical Chemistry Analysers

Catalogue of Products

ISE

CUSTOMISED SOLUTIONS
FOR YOUR LABORATORY



check our website at www.logotech-ise.com

for news and updates



Company Contacts

| Name | Function | Office Phone | E-mail |
|---------------------|------------------------------------|------------------|--------------------------------|
| Marco Spadaccioli | General Manager & COO | +39 0774 579 334 | m.spadaccioli@logotech-ise.com |
| Marc Eijkhout | Sales Director | +39 3494 53 2166 | m.eijkhout@logotech-ise.com |
| Gianfranco Grifoni | R&D Director | +39 0774 579 308 | g.grifoni@logotech-ise.com |
| Simon Middleton | Special Projects | +39 0774 579 398 | s.middleton@logotech-ise.com |
| Alessio Sapienza | Service Department | +39 0774 579 364 | service@logotech-ise.com |
| Claudio Ruggeri | R&D SW Developer | +39 0774 579 358 | c.ruggeri@logotech-ise.com |
| Leonardo Nocera | QC Instruments | +39 0774 579 374 | l.nocera@logotech-ise.com |
| Claudia Piattellini | Purchase Department | +39 0774 579 365 | c.piattellini@logotech-ise.com |
| Federica Russo | Customer Care & Sales Department | +39 0774 579 326 | f.russo@logotech-ise.com |
| Marcom | Marketing Communication Department | +39 0774 579 326 | marcom@logotech-ise.com |

Miura Family

Fully-automated Clinical Chemistry Analysers

Miura One

Fully-automated
Clinical Chemistry Analyser
up to 180 tests/hour



Miura 200

Fully-automated
Clinical Chemistry Analysers
up to 420 tests/hour



Miura

Fully-automated
Clinical Chemistry Analyser
up to 500 tests/hour



SOFTWARE



REAGENTS

MIURA ONE



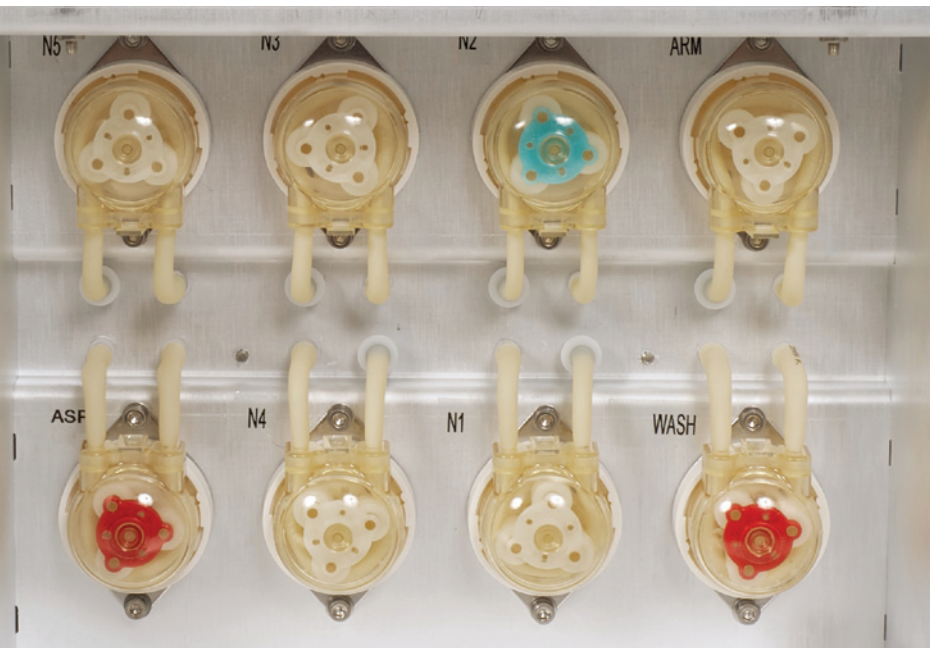
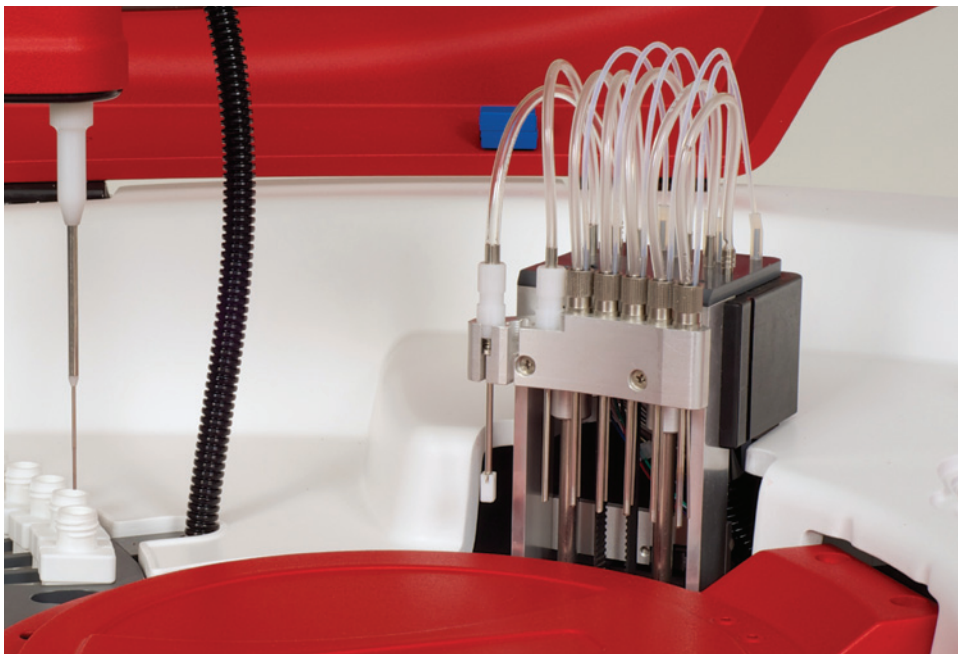
PURE RANDOM ACCESS

Miura One

Fully-automated Clinical Chemistry Analyser
up to 180 tests / hour with ISE module on board

- Miura One is a small yet smart random access fully automated analyser.
- Miura One is designed to meet the requests of labs, doctor offices, clinics and veterinary labs.
- 2 different reagents/samples configuration.
- 19 reagents on board with 50ml R1 vials and/or 20ml R2 vials plus 9 samples plus diluent.
- 19 reagents on board with 35ml vials and/or 15ml R2 vials plus 15 samples plus diluent.
- Integrated ISE module for Na⁺, K⁺, Li⁺, Cl⁻ in serum, plasma and diluted urine (optional).
- Integrated washing station.
- Integrated level and shock sensor for samples and reagents.
- Integrated positive identification for samples and reagents.
- Integrated micro metering diluter. No glass syringe.
- 2 years warranty.
- Miura One is 100% developed and produced in Italy.



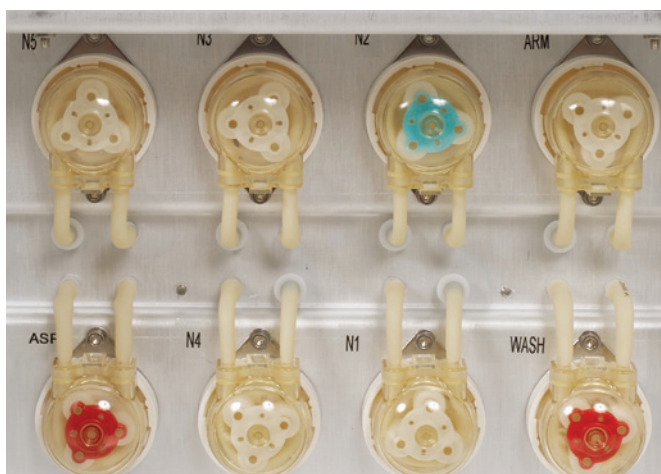
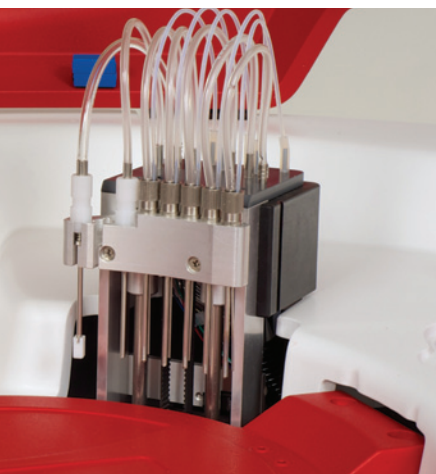


TECHNICAL SPECIFICATIONS



- Up to 180 tests per hour with ISE module on board.
- Up to 100 photometric tests per hour.
- Analytical methods: end point mono or bichromatic, fixed time, kinetic, differential sample blank.
- ISE module for: Na⁺, K⁺, Li⁺, Cl⁻ in serum, plasma and diluted urine (optional).
- 19 parameters on line plus diluent with 50ml R1/ 20ml R2 vials.
- 19 parameters on line plus diluent with 35ml R1/ 15ml R2 vials.
- Mono, double, triple reagents method.
- Reaction temperature: +37°C ± 0.1°C.
- 9/15 sample/calibrator/control positions on primary tubes (Ø12÷13mm × 75/85mm) and sample cups (3ml).
- Automatic dilution of the samples.
- Calibration with linear/non linear curves up to 8 points, auto dilution of the calibration curve (linear regression, linear piece-wise, cubic spline, polynomial).
- Control menu with Levy-Jennings plot.
- Bar-code reader integrated for samples and reagents (optional).
- Arm equipped with liquid level detector (capacitive) and shock sensor.
- High Precision Micro-metering pump to dispense reagents and samples (no syringe).
- Reagent volume: 1÷400 microliters.
- Sample volume: 1÷300 microliters.
- Typical reaction volume: 200-250 microliters.
- Wavelengths on-board: 8 from 340nm to 700nm plus one free position.
- Light source: Long life halogen lamp (2000 hours).
- Photometric linearity: 0÷3.0 OD.
- Reading cuvette: 80 on-board re-washable made in Bionex®.
- Cuvette washing: automatic washing station.
- Water consumption: 1½ liters per hour.
- Reagent cooler: 14°C below ambient temperature.
- All in one touch screen computer.
- L.I.S.: Bi-directional connection.
- Operative system: MS Windows®.
- Environment temperature 18-32°C.
- Dimensions: 83x62x64 cm.
- Weight: 42 kg.

MIURA 200 - DOUBLE ARM



PURE RANDOM ACCESS

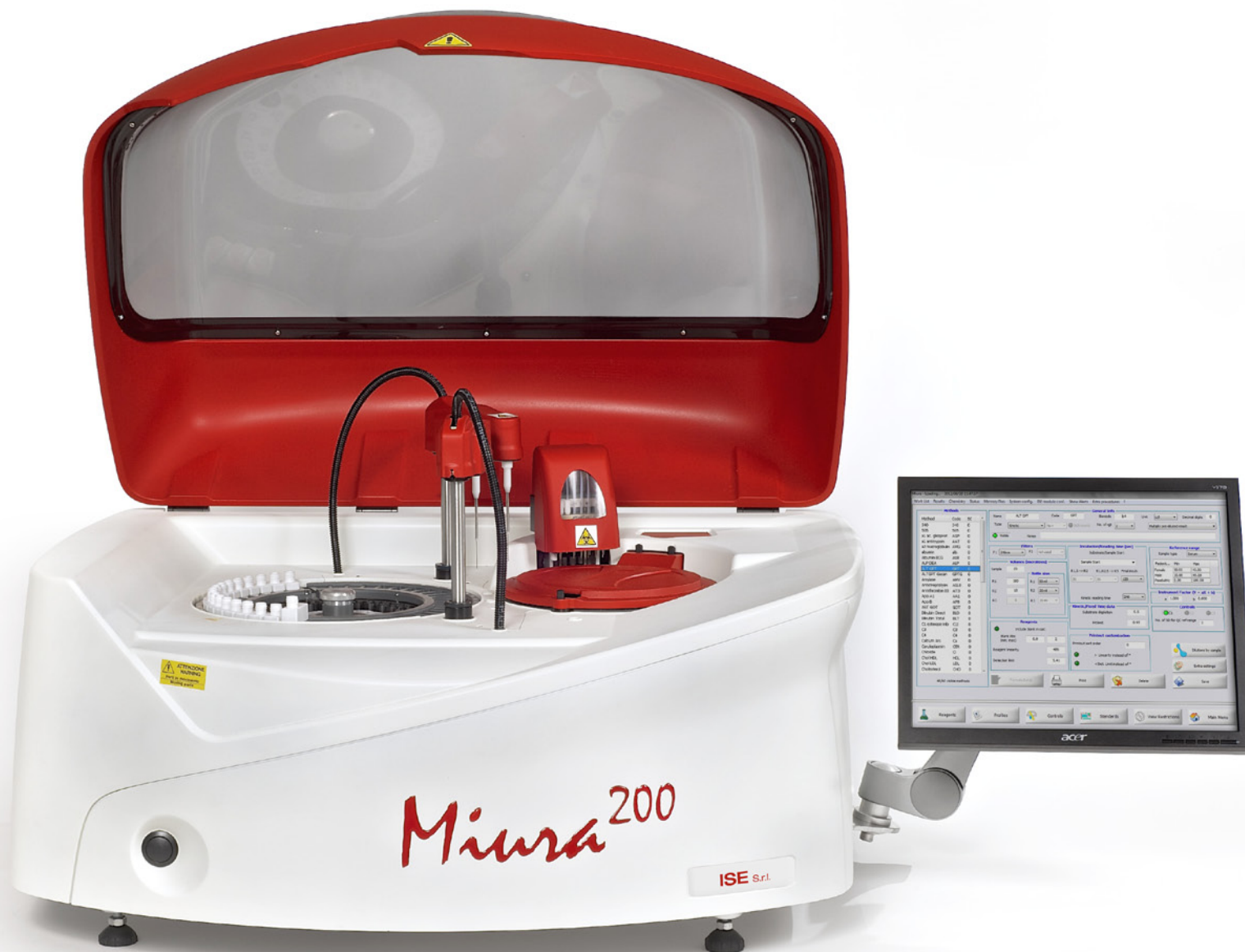
Miura²⁰⁰

Fully-automated Clinical Chemistry Analyser
up to 420 tests / hour with ISE module on board

- The New Miura 200 is the idea we have for a compact bench top random access fully automated analyser with the performance of higher class instruments.
- No compromise between throughput and size of the New Miura 200.
- The New Miura 200 is the solution for all kinds of laboratories as a main unit or a back up unit.
- 30/43 reagents on board plus diluent.
- 49 samples on board.
- Integrated ISE module for Na⁺, K⁺, Li⁺, Cl⁻ in serum, plasma and diluted urine (optional).
- Integrated washing station.
- Integrated level and shock sensor for samples and reagents.
- Integrated positive identification for samples and reagents.
- Integrated micro metering diluter maintenance free.
- 2 years warranty.
- Miura 200 is 100% developed and produced in Italy.



MIURA 200



TECHNICAL SPECIFICATIONS

Double arm

- Up to 420 tests per hour with ISE module on board.
- 240 Bi-reagent photometric tests/hour constant throughput.

Single arm

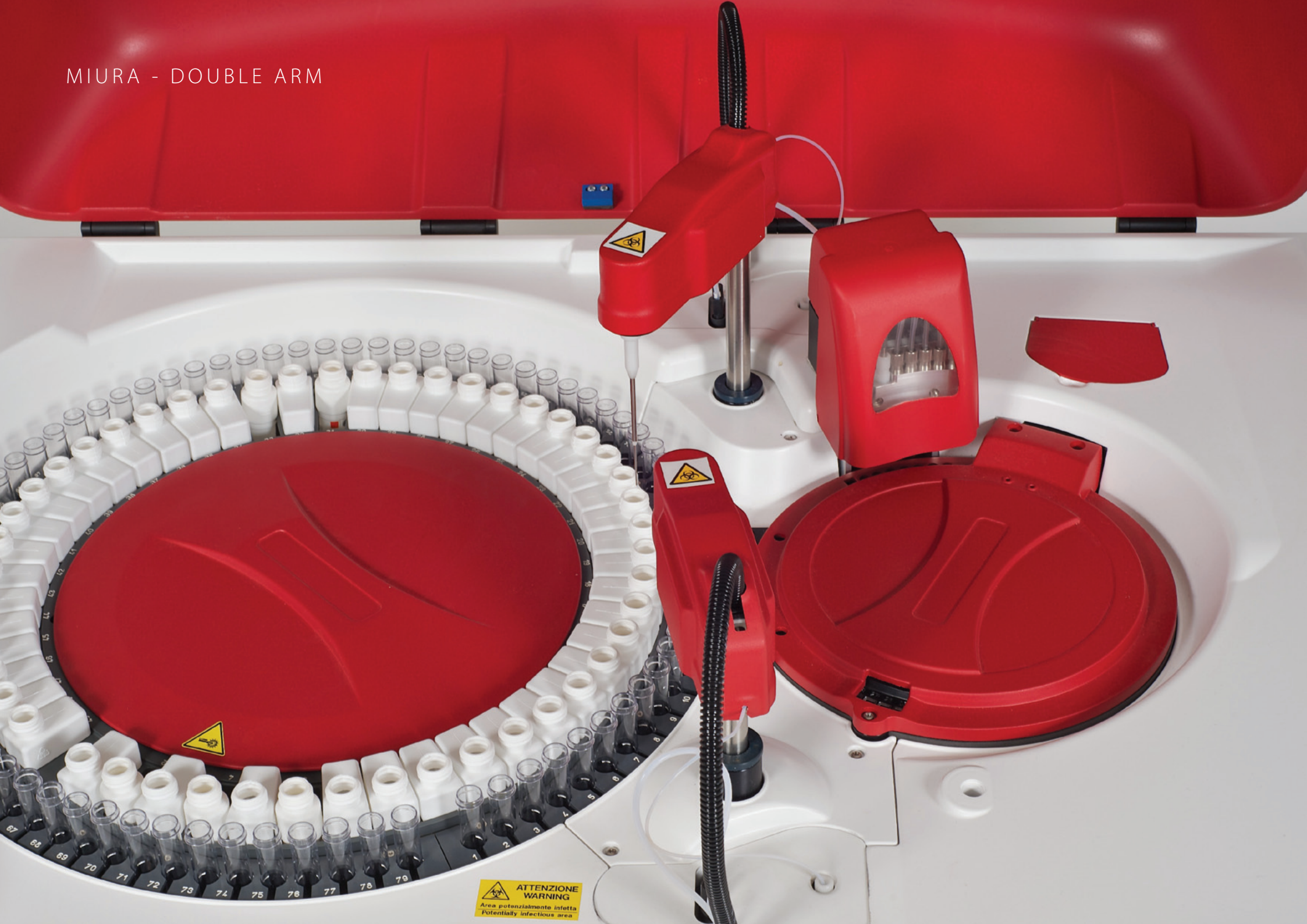
- Up to 360 tests per hour with ISE module on board.
- Up to 200 mono reagent tests per hour.

Common Specifications

- Analytical methods: end point mono or bichromatic, fixed time, kinetic, differential sample blank.
- ISE module for: Na⁺, K⁺, Li⁺, Cl⁻ in serum, plasma and diluted urine (optional).
- 30/43 reagents on board plus diluent.
- Mono, double reagents method.
- Reaction temperature: +37°C ± 0.1°C.
- 49 sample/ calibrator/control positions on primary tubes (Ø 12÷13mm/75/100mm).
- Automatic dilution of the samples.
- Calibration with linear/non linear curves up to 8 points, auto dilution of the calibration curve (linear regression, linear piece-wise, cubic spline, polynomial).
- Control menu with Levy-Jennings plot.
- Bar-code reader integrated for samples and reagents (optional).
- Arm equipped with liquid level detector (capacitive) and shock sensor.
- High precision micro-metering pump to dispense reagents and samples (no syringe).
- Reagent volume:
 - 1 ÷ 400 µl for Single Arm
 - 1 ÷ 300 µl for Double Arm
- Sample volume:
 - 1 ÷ 300 µl for Single Arm
 - 1 ÷ 50 µl for Double Arm
- Typical reaction volume: 200-250 microliters.
- Wavelengths on board: 8 from 340nm to 700nm plus one free position.
- Light source: Long life halogen lamp (2000 hours).
- Photometric linearity: 0÷3.0 OD.
- Reading cuvette: 80 on board re-washable made in Bionex®.
- Cuvette washing: automatic washing station.
- Water consumption: 3/5 liters per hour.
- Reagent cooler: 14°C below ambient temperature.
- All in one touch screen computer.
- L.I.S.: Bi-directional connection.
- Operative system: MS Windows®.
- Environment temperature 18-32°C.
- Dimensions: 93x72x60.



MIURA - DOUBLE ARM



PURE RANDOM ACCESS

Miura

Fully-automated Clinical Chemistry Analyser

Double Arm - up to 500 tests / hour with ISE module on board



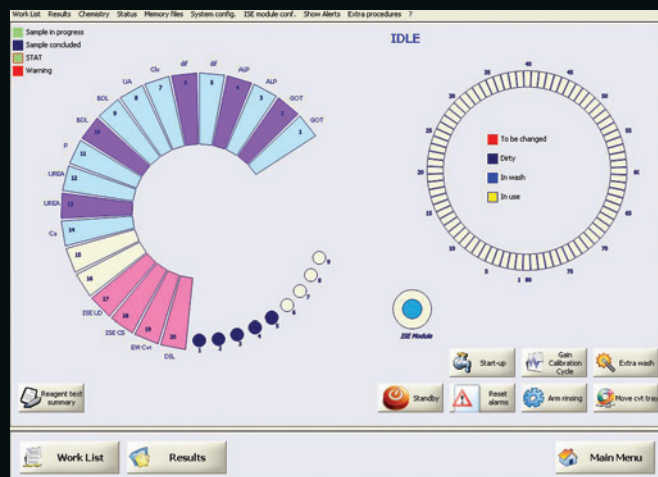
- Miura is a random access fully automated analyser and is the right solution for all kinds of laboratories.
- Miura is a sophisticated yet user friendly solution.
- The smart software interface, designed to be used in few steps and translated in several different languages, makes the Miura the logic choice for the laboratories all over the world.
- Bench top or floor stand.
- 49 reagents on board with 50ml R1 vials and/or 20ml R2 vials.
- 59/79 samples on board.
- Integrated ISE module for Na+, K+, Li+, Cl- in serum, plasma and diluted urine (optional).
- Integrated washing station.
- Integrated level and shock sensor for samples and reagents.
- Integrated positive identification for samples and reagents.
- Integrated micro metering diluter maintenance free.
- 2 years warranty.
- This is our idea of a random access analyser.
- Miura is 100% developed and produced in Italy.



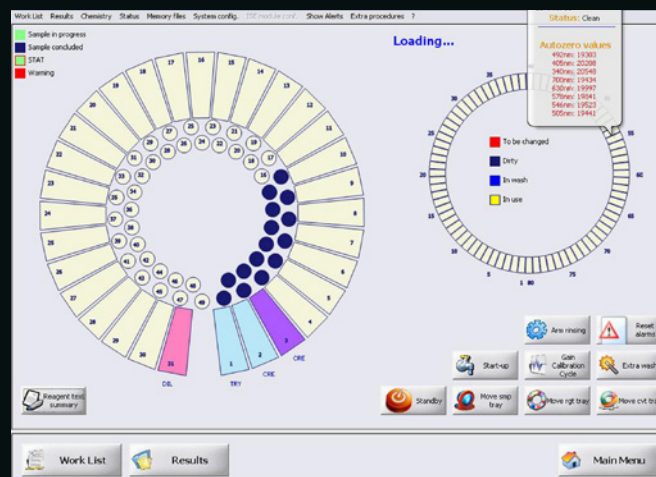
TECHNICAL SPECIFICATIONS



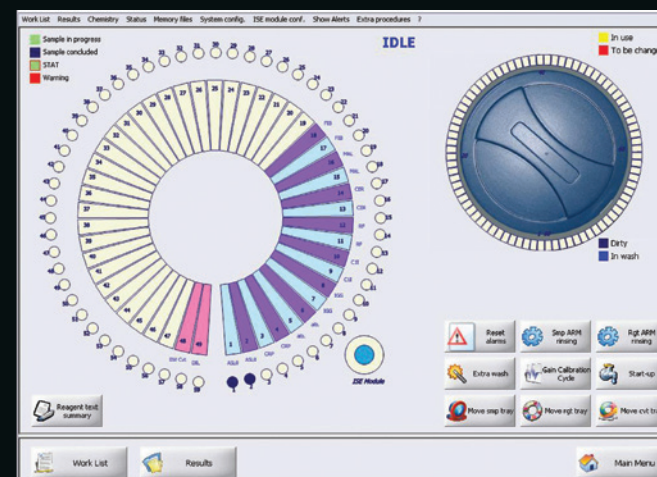
- Up to 500 tests per hour with ISE, Up to 300 photometric tests / hour.
- 59/79 sample/calibrator/control positions on primary tubes ($\varnothing 12 \div 13 \text{ mm} \times 75/100 \text{ mm}$) and sample cups (3ml).
- Analytical methods: end point mono or bichromatic, fixed time, kinetic, differential sample blank,
- Integrated ISE module for: Na^+ , K^+ , Li^+ , Cl^- in serum, plasma and diluted urine (optional).
- 48 parameters on line plus diluent with 50ml R1/20ml R2 vials.
- Mono, double, triple reagents method.
- Reaction temperature: $+37^\circ\text{C} \pm 0.1^\circ\text{C}$.
- Automatic auto dilution of the samples.
- Calibration with linear/non linear curves up to 8 points, auto dilution of the calibration curve (linear regression, linear piece-wise, cubic spline, polynomial).
- Control menu with Levy-Jennings plot.
- Bar-code reader integrated for samples and reagents (optional).
- Arm equipped with liquid level detector (capacitive) and shock sensor.
- High Precision Micro-metering pump to dispense reagents and samples (no syringe).
- Reagent volume: $1 \div 400$ microliters.
- Sample volume: $1 \div 300$ microliters.
- Typical reaction volume: 200-250 microliters.
- Wavelengths on-board: 8 from 340nm to 700nm plus one free position.
- Light source: Long life halogen lamp (2000 hours).
- Photometric linearity: $0 \div 3.0 \text{ OD}$.
- Reading cuvette: 80 on-board re-washable made in Bionex®.
- Cuvette washing: automatic washing station.
- Water consumption: 3 liters per hour.
- All in one touch screen computer.
- L.I.S.: Bi-directional connection.
- Operative system: MS Windows®.
- Environment temperature $18\text{-}32^\circ\text{C}$.
- Bench top version dimensions: $114 \times 75 \times 60 \text{ cm}$. Weight: 80 kg.
- Floor stand version dimensions: $190 \times 77 \times 132 \text{ cm}$. Weight: 155 kg.



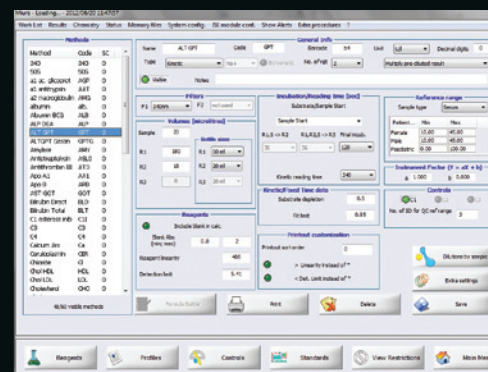
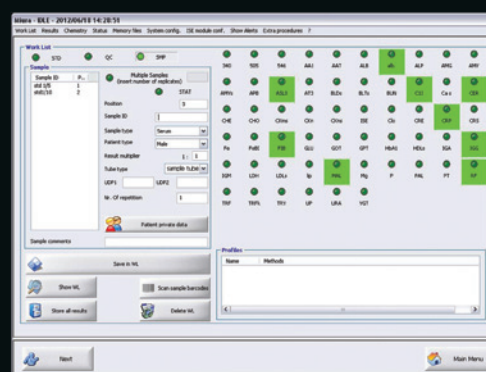
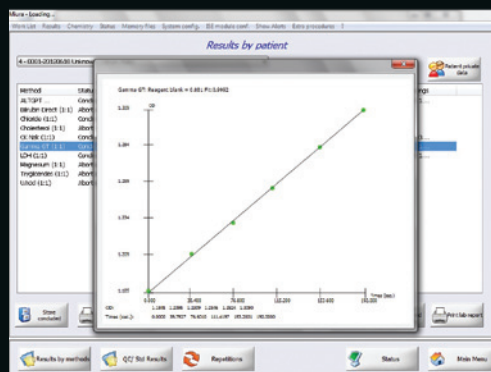
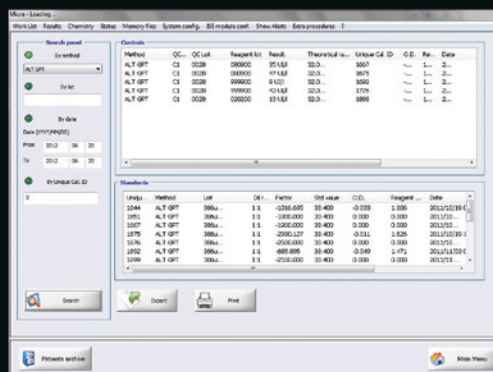
Miura One



Miura 200



Miura



MIURA FAMILY SOFTWARE

MAKES YOUR LIFE EASIER IN THE LAB

Miura Family software, developed by I.S.E. Group, is MS Windows® based software that is designed to give you an 'ease of use experience' with all our fully automated Miura analysers.

Miura software provides you with instant flexibility, fast programming sample routine in combination with different test profiles next to monitoring of daily test routines as well for fast lookup about patient history test data, it are all standard features in this straightforward and undemanding operator software.

Visualization of work sessions will give you an easy and clear insight in a split second. Combined with maximum flexibility in programming, the user can have a fast introduction of new methods and applications to a maximum grade of freedom. A virtually unlimited number of test protocols and test data is automatically storable and accessible to the Miura system. Neat panel draw ups provide the operator a maximum choice for his needs.

Only One training session on Miura operational software, will be sufficient for understanding and getting started with smoothly operating all models of our Miura automated analysers: a training session that reduce your service costs!

Main software characteristics:

- Programmable instrument stand-by and wake-up functionality.
- Intuitive, modern and 'ease of use' graphical user interface that guides the user hassle free through all operations.
- Display of quality control levels with Levy-Jennings graphics.
- Fully bidirectional L.I.S. support with or without Host/Query.
- Smart visualization from all types of calibrations.
- Self-diagnosis and alarm procedures are an integral part of the Miura software.
- Custom made profiles for easy operation.
- Powerful and expandable archive for patients test result, including standards and QC-results.
- Active monitoring of reagents and main instrument liquid levels.
- Compact maintenance module active on demand.

STABLE LIQUID REAGENTS

- The Miura family wants to simplify your routine work. I.S.E offers a complete CE marked reagent panel (mono or bi-reagent) ready to use.
- Twenty-eight parameters for enzymes and substrates, with application on serum, plasma and urine, based on the most advanced research in clinical chemistry following international recommendations (IFCC).
- Positive identification of reagents gives the end user the assurance to work without compromises on quality.
- Twenty-eight parameters for specific protein, with application on serum, plasma and urine, standardized with 5-point calibration curve.



CLINICAL CHEMISTRY REAGENT KITS

| | | | | | | | | |
|---------------|----------------------|---------|---------------|-----------------|---------|---------------|---------------|---------|
| A-R0100000001 | ALBUMIN BCG | 6x50 ml | A-R0200000401 | CK MB SL | 2x50 ml | A-R0200000500 | IRON FERENE | 4x50 ml |
| A-R0200001001 | ALT / GPT | 4x50 ml | A-R0200000301 | CK NAC | 4x50 ml | A-R0200000801 | MAGNESIUM | 4x50 ml |
| A-R0200000001 | ALP (DEA) | 4x50 ml | A-R0200000501 | CREATININE | 4x50 ml | A-R0100000701 | PHOSPHOROUS | 6x50 ml |
| A-R0000000001 | AMYLASE | 3x50 ml | A-R0200000601 | GAMMA GT | 4x50 ml | A-R0100000801 | TOTAL PROTEIN | 6x50 ml |
| A-R0200001101 | AST / GOT | 4x50 ml | A-R0100000601 | GLUCOSE | 6x50 ml | A-R0100000901 | TRIGLYCERIDES | 6x50 ml |
| A-R0100000201 | BILIRUBIN DIRECT | 4x50 ml | A-R0200001301 | HDL CHOLESTEROL | 2x40 ml | A-R0200000901 | UREA UV | 4x50 ml |
| A-R0100000101 | BILIRUBIN TOTAL | 4x50 ml | A-R0200001401 | LDL CHOLESTEROL | 1x40 ml | A-R0100001001 | URIC ACID | 4x50 ml |
| A-R0100000301 | CALCIUM ARSENazo III | 6x50 ml | A-R0200001201 | LDH-P | 4x50 ml | | | |
| A-R0100000501 | CHOLESTEROL | 6x50 ml | | | | | | |

CLINICAL CHEMISTRY CALIBRATORS & CONTROLS

| | | | | | |
|-------------|-------------------------------|----------|-------------|-----------------------------------|--------|
| R1300001101 | ASL(O) Standard High | 1 ml | R1300002901 | FERRITIN Standard Kit | 5x1 ml |
| R1300001301 | CRP Standard High | 1 ml | R1400000401 | APO A1/B Control | 1 ml |
| R1300001901 | RF Standard High | 1 ml | R1400001701 | FIBRINOGEN Control | 1 ml |
| R1300002501 | PROTEIN Standard High | 1 ml | R1400000501 | LIPOPROTEIN (A) Control Low | 1 ml |
| R1300001501 | APO A1/B Standard High | 1 ml | R1400000601 | LIPOPROTEIN (A) Control High | 1 ml |
| R1300002001 | MICROALBUMIN Standard Kit | 5x1 ml | R1400000301 | BETA 2 MICROGLOBULIN Control Low | 1 ml |
| R1300002201 | FIBRINOGEN Standard | 1x0.5 ml | R1400001601 | BETA 2 MICROGLOBULIN Control High | 1 ml |
| R1300001701 | LIPOPROTEIN (A) Standard High | 1 ml | R1400000901 | IMMONOLOGY Control Low | 1 ml |
| R1300002601 | BETA 2 MICROGLOBULIN Standard | 1 ml | R1400001001 | IMMONOLOGY Control High | 1 ml |

GENERIC CALIBRATORS & CONTROLS

| | | |
|-------------|----------------------------|--------|
| R0300000006 | Multicalibrator | 4x3 ml |
| R0400000006 | Normal Control Serum | 4x5 ml |
| R0400000106 | Pathological Control Serum | 4x5 ml |

DEDICATED CALIBRATORS & CONTROLS

| | | |
|-------------|----------------------|--------|
| R0300000009 | HDL / LDL Calibrator | 1x3 ml |
| R0400000300 | HDL / LDL Control | 1x3 ml |
| R0400000400 | CKMB Control | 1x3 ml |

TURBIDIMETRY REAGENT KITS

| | | | | | |
|---------------|----------------------------|---------------|---------------|--------------------|----------------|
| A-R1100000101 | ALBUMIN | 1x50/1x9.5 ml | A-R1100003301 | FIBRINOGEN | 1x25/1x5 ml |
| A-R1100001401 | ALFA-1 - ACID GLYCOPROTEIN | 1x50/1x7.5 ml | A-R1100000601 | HAPTOGLOBIN | 1x50/1x7 ml |
| A-R1100001301 | ALFA-1 - ANTITRYPSIN | 1x50/1x10 ml | A-R1100003401 | IgA | 1x50/1x8 ml |
| A-R1100002201 | ALFA-2 MACROGLOBULIN | 1x50/1x5.5 ml | A-R1100003501 | IgG | 1x50/1x11.5 ml |
| A-R1100002501 | ANTITHROMBIN III | 1x50/1x7.5 ml | A-R1100003601 | IgM | 1x50/1x6.5 ml |
| A-R1100000201 | APOLIPO PROTEIN A1 | 1x50/1x9.5 ml | A-R1100003701 | KAPPA LIGHT CHAIN | 1x50/1x9 ml |
| A-R1100000301 | APOLIPO PROTEIN B | 1x50/1x6.5 ml | A-R1100003801 | LAMBDA LIGHT CHAIN | 1x50/1x9 ml |
| A-R1100001901 | C1 ESTERASE INHIBITOR | 1x50/1x5 ml | A-R1100002901 | LIPOPROTEIN (A) | 1x50/1x6 ml |
| A-R1100002001 | CERULOPLASMIN | 1x50/1x7.5 ml | A-R1100003901 | MICROALBUMIN | 1x50/1x7 ml |
| A-R1100002601 | COMPLEMENT C3 | 1x50/1x7.5 ml | A-R1100003001 | PREALBUMIN | 1x50/1x5.5 ml |
| A-R1100003201 | COMPLEMENT C4 | 1x50/1x7 ml | A-R1100004201 | TRANSFERRIN | 1x50/1x5 ml |
| A-R1100004001 | CRP | 1x50/1x5.5 ml | | | |

LATEX REAGENTS

| | | |
|---------------|------------------------|---------------|
| A-R1100004401 | ANTI-STREPTOLYSIN (O) | 1x50/1x8.5 ml |
| A-R1100001801 | BETA 2 - MICROGLOBULIN | 1x50/1x7.5 ml |
| A-R1100004301 | FERRITIN | 1x25/1x7.5 ml |
| A-R1100004101 | RHEUMATOID FACTOR | 1x25/1x5 ml |

HbA1c TESTING

| | | |
|---------------|--------------------|--|
| A-R0000000029 | HbA1c | 1x20 ml R1 / 1 x 4.5 ml R2 / 2 x 32 ml LYS |
| R0400000007 | Control Low HbA1c | 1 x 0.5 ml |
| R0400000004 | Control High HbA1c | 1 x 0.5 ml |
| R0300000003 | HbA1c Calibrator | 1 x 2 ml / 4 x 0.5 ml (5 levels) |
| A-R0000000030 | HbA1c - Lysante | 1x20/1x4,5 ml |

ISE MODULE

| | | |
|-------------|--|--------|
| S3141000284 | ISE module - Na Electrode | 1 set |
| S3141000285 | ISE module - K Electrode | 1 set |
| S3141000286 | ISE module - Cl Electrode | 1 set |
| S3141000287 | ISE module - Li Electrode | 1 set |
| S3141000288 | ISE module - Reference Electrode | 1 set |
| S3141000289 | ISE module - Spacer Electrode | 1 set |
| S3141000290 | Ise module - Reagent Pack (Cal A, Cal B) | 1 set |
| S3141000291 | ISE module - Urine Diluent | 500 ml |
| S3141000292 | ISE module - Cleaning Solution | 90 ml |

MIURA SYSTEM CONSUMABLES

| | | |
|-------------|-----------------------------|-----------|
| P3140000102 | SYSTEMIC SOLUTION | 2x1000 ml |
| P3140000282 | MULTICLEAN SOLUTION | 2x100 ml |
| P3140000342 | CLEANER SOLUTION | 2x2000 ml |
| P3140000113 | RINSE SOLUTION (EW CVT) | 6x50 ml |
| P3140000274 | RINSE SOLUTION (EW CVT) | 6x35ml |
| P3140000349 | RINSE SOLUTION (Ew CVT) New | 6x50ml |
| P3140000351 | RINSE SOLUTION (Ew CVT) New | 6x35ml |
| P3140000115 | RINSE SOLUTION (EW PRB) | 6x20 ml |
| P3140000275 | RINSE SOLUTION (EW PRB) | 6x15 ml |

R&D and Production:

I.S.E. S.r.l.

Via Luigi Einaudi, 7
Guidonia Montecelio
00012 Rome, Italy

Tel: + 39 0774 579 365

Fax: + 39 0774 353 085

Legal site:

I.S.E. S.r.l.

Via delle Driadi, 45
00133 Rome, Italy



I.S.E. is a dynamic company specialised in development and manufacturing of Laboratory Analysers and associated Reagents.

I.S.E. is an ISO 9001:2015 and ISO 13485:2016 certified company and all our products are CE marked. Several other certifications available.

I.S.E. have thousands of solutions installed worldwide. I.S.E. provides to our customers high end, high quality and reliable solutions of Analysers and Reagents.

Ease of use, combined with minimal operating requirements makes ISE systems the best choice for any laboratory.

We are dedicated to customer satisfaction and will do the utmost to respond quickly to your needs.



Customer Care Center:
info@logotech-ise.com

Tel: +39 0774 579 326

Fax: +39 0774 579 085

Sales and Marketing office:
sales@logotech-ise.com

Tel: +39 0774 579 334

Fax: +39 0774 579 085

Technical service:
service@logotech-ise.com

Tel: +39 0774 579 364

Order handling and logistics:
order@logotech-ise.com

Tel: +39 0774 579 365

© Nov. 2022 Ref. BR01008 V3.1 I.S.E. S.r.l.

All rights reserved. All trademarks are property of their respective owners. Specifications are subject to change without notice.

